



## Volume Homes

Want to increase your profit but struggling to find a better system that doesn't compromise on quality?



Innovation Integration Sustainability

[www.framecad.com](http://www.framecad.com)



NEW ZEALAND - Sustainable Home



# FRAMECAD™

**Increase your production rate of high quality, residential homes.**

*With the revolutionary FRAMECAD steel framing solution, we can help your business maximise margins by optimising your manufacturing & assembly rates and lowering your total cost of build.*

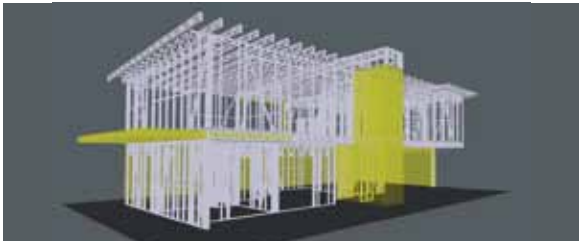
FRAMECAD's total solution integrates intuitive engineering software with reliable, steel frame manufacturing machines. Complimented by an efficient building products supply chain, your company can be manufacturing sustainable, high quality houses faster than ever before.

A wide range of training and consulting services are also available to assist companies with their adoption of the FRAMECAD system. By minimising downtime and upskilling managers and operators, companies can implement the FRAMECAD system and be reaching optimal production rates in no time.

# The Smarter Steel Frame Business Solution

*Gain a competitive edge and take advantage of growing market trends with the ability to sell sustainable, open plan homes.*

With the FRAMECAD rapid construction system all steel scraps are fully recyclable. Producing less than 1% waste, the FRAMECAD system is the sustainable, eco-efficient building method of choice.



FRAMECAD Detailer - Design to local building codes



FRAMECAD F300i - Manufacture frames faster



Reduce labour cost with the easy to use FRAMECAD system



High strength to weight ratio make steel easier to transport



FRAMECAD Building Products - Ensure a high quality finish

Open plan homes can that require wider truss spans can also be easily achieved as steel possesses the highest strength-to-weight ratio of any other building material (including timber and block).

As well as being a sustainable and design flexible system the FRAMECAD total solution can also help your business to:

## **Win additional local and international contracts.**

The FRAMECAD Software incorporates light gauge steel building codes from around the world and will output calculations as required for environmental considerations such as cyclonic, fire, seismic, etc.

## **Reduce onsite rework and warranty provisions.**

The FRAMECAD system automatically produces light gauge steel frames that are accurate, impermeable, straight and true. So for timber framers this means no more bows, nail pops or squeaky floors. Companies can also increase margins by manufacturing frames 30% faster than traditional building methods as just one machine can produce all the frames for your walls, floors and trusses. It may seem cheaper to use traditional materials but if it takes three times longer to complete the build, you may be wasting money and missing out on profit!

For high volume, multi storey environments, build even faster with the FRAMECAD FL650 flooring machine.

**Reduce labour costs.** The FRAMECAD automated system simplifies the assembly process so that even low cost, unskilled labour can assemble frames. Assembly errors are minimised as fastener holes are prepunched and label references are printed on every steel member. Additionally, FRAMECAD have developed a range of FRAMECAD X-Drive® Framing Fasteners so that frames can be assembled even easier and faster.

**Maximise resources** by choosing the most appropriate building methodology for your business (build-on-site, modular, prefab or transportable) while still reducing transport costs due to the light weight nature of steel.

**Ensure a high quality finish** and gain a competitive edge by building houses and that look like traditional houses but have all the benefits of building with steel.

For more information on how your volume home projects will be more sustainable, consistent, of higher quality and quicker to complete contact your regional FRAMECAD team.

# Design Possibilities with the FRAMECAD System



AUSTRALIA - Single Storey Volume Home



KSA - Double Storey Villas



USA - Single Storey Residential Home



DUBAI - Double Storey Luxury Volume Home

For more information contact:

## **Auckland, New Zealand (Head Office)**

FRAMECAD Ltd

115 Felton Mathew Ave, PO Box 1292  
Auckland 1140, New Zealand

**P** +64 9 377 6640

**F** +64 9 307 7139

**E** [info@framecad.com](mailto:info@framecad.com)

[www.framecad.com](http://www.framecad.com)

## **Dubai, UAE**

FRAMECAD Solutions (ME) FZ-LLC

Level 7, Suite 704, Al Thuraya Tower 1

Dubai Internet City

Dubai, United Arab Emirates

**P** +971 4 433 5675

**F** +971 4 429 0661

**E** [info@framecad.com](mailto:info@framecad.com)

[www.framecad.com](http://www.framecad.com)

## **Melbourne, Australia**

FRAMECAD Solutions Australia Pty Ltd

Unit 1, 15-21 Huntingdale Road

Burwood, Victoria 3125

**P** 1300 FRMCAD (1300 376 223)

**F** +61 3 9830 6694

**E** [info@framecad.com](mailto:info@framecad.com)

[www.framecad.com.au](http://www.framecad.com.au)

## **Hong Kong**

FRAMECAD (Asia) Ltd

**P** +852 5321 3775

**E** [info@framecad.com](mailto:info@framecad.com)

[www.framecad.com/cn](http://www.framecad.com/cn)

This document has been published for the purpose of providing information of a general nature only. Further, no guarantee, warranty, or any other form of assurance is given as to the accuracy, currency or completeness of the information provided. Accordingly, any reliance on, or use, by you of any information contained within this document for any purpose whatsoever shall be entirely at your own risk, and any liability to you is expressly disclaimed to the maximum extent permitted by law. FRAMECAD, Steel FrameMaster, FrameMaster, logos and the colour green are trademarks and the property of FRAMECAD Ltd.

Copyright 2011 FRAMECAD Ltd. Reproduction of any part of this document is prohibited, except with the prior written consent of FRAMECAD Ltd.