



Factory Built Transportables

Want to increase your production capacity?



Innovation Integration Sustainability

www.framecad.com



MIDDLE EAST - Site Offices



FRAMECAD™

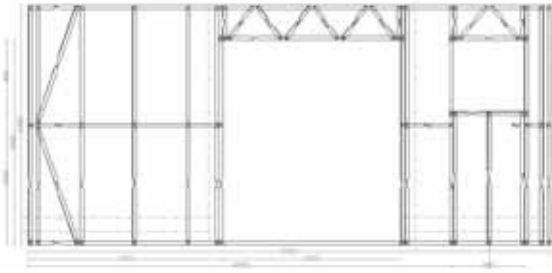
Increase your production rate and build highly repeatable prefabricated site offices, mining offices, portacabins, ablution blocks and residential homes.

With FRAMECAD's innovative total solution we can help your business maximise resources and gain a better return on investment by providing a faster, more efficient building system.

FRAMECAD's total solution is a screw based, cut to length light gauge steel framing system. With a focus on innovation and integration, the FRAMECAD system enables larger companies to easily monitor and control the production of transportable units across multiple plants.

Supported by an efficient building products supply chain, the FRAMECAD system integrates intuitive engineering software with reliable manufacturing machinery. A wide range of training and consulting services are also available to assist companies with their adoption of the FRAMECAD system. By minimising downtime and upskilling managers and operators, companies can implement the FRAMECAD system and be reaching optimal production rates in no time.

The Smarter Steel Frame Business Solution



Design to local and international building codes



FRAMECAD F300i - Manufacture frames faster



Reduce labour cost with the easy to use FRAMECAD system



Optimise factory floor space



Produce high quality residential transportable homes

Committed to helping our customers' succeed, FRAMECAD's total solution can help businesses to:

Extend market share with the ability to tender for both domestic and exporting contracts. The FRAMECAD Software incorporates light gauge steel building codes from around the world and will output calculations as required for environmental considerations such as seismic, cyclonic, fire, etc.

Increase margins by manufacturing frames 30% faster than traditional building methods. Just one FRAMECAD machine can produce all the frames for your walls, floors, panels and trusses.

Reduce labour costs. The FRAMECAD automated system simplifies the assembly process so that even low cost, unskilled labour can assemble frames. Assembly errors are also minimised as fastener holes are prepunched and label references are printed on each steel member. Additionally, FRAMECAD have developed a range of FRAMECAD X-Drive® Framing Fasteners so that frames can be assembled even easier and faster.

Optimise factory floor space. Compared to traditional stud & track welding systems, the FRAMECAD cut to length, steel framing system requires less factory floor space during assembly. This allows businesses to optimise their factory floor for other, more beneficial uses such as additional storage space for completed units.

Rapid production of quality transportable units. FRAMECAD offer a range of carefully selected building products that are high performance, durable and easy to install. Supported by an effective supply chain, FRAMECAD's building products supports a high quality building system.

Expand your business with the ability to manufacture and build a range of small transportable offices to high quality, multi-bedroom residential homes using the same FRAMECAD manufacturing system.

For more information on how your transportable and prefabricated units can be more economical, consistent, accurate, and quicker to complete contact your regional FRAMECAD team.

Design Possibilities with the FRAMECAD System



MIDDLE EAST - Transportable Units



MIDDLE EAST - Site Offices with Air Conditioning Installations



USA - Site Offices with Plumbing Installations



USA - Transportable Units

For more information contact:

Auckland, New Zealand (Head Office)

FRAMECAD Ltd
115 Felton Mathew Ave, PO Box 1292
Auckland 1140, New Zealand

P +64 9 377 6640
F +64 9 307 7139
E info@framecad.com
www.framecad.com

Dubai, UAE

FRAMECAD Solutions (ME) FZ-LLC
Level 7, Suite 704, Al Thuraya Tower 1
Dubai Internet City
Dubai, United Arab Emirates

P +971 4 433 5675
F +971 4 429 0661
E info@framecad.com
www.framecad.com

Melbourne, Australia

FRAMECAD Solutions Australia Pty Ltd
Unit 1, 15-21 Huntingdale Road
Burwood, Victoria 3125

P 1300 FRMCAD (1300 376 223)
F +61 3 9830 6694
E info@framecad.com
www.framecad.com.au

Hong Kong

FRAMECAD (Asia) Ltd

P +852 5321 3775
E info@framecad.com
www.framecad.com/cn

This document has been published for the purpose of providing information of a general nature only. Further, no guarantee, warranty, or any other form of assurance is given as to the accuracy, currency or completeness of the information provided. Accordingly, any reliance on, or use, by you of any information contained within this document for any purpose whatsoever shall be entirely at your own risk, and any liability to you is expressly disclaimed to the maximum extent permitted by law. FRAMECAD, Steel FrameMaster, FrameMaster, logos and the colour green are trademarks and the property of FRAMECAD Ltd.

Copyright 2011 FRAMECAD Ltd. Reproduction of any part of this document is prohibited, except with the prior written consent of FRAMECAD Ltd.